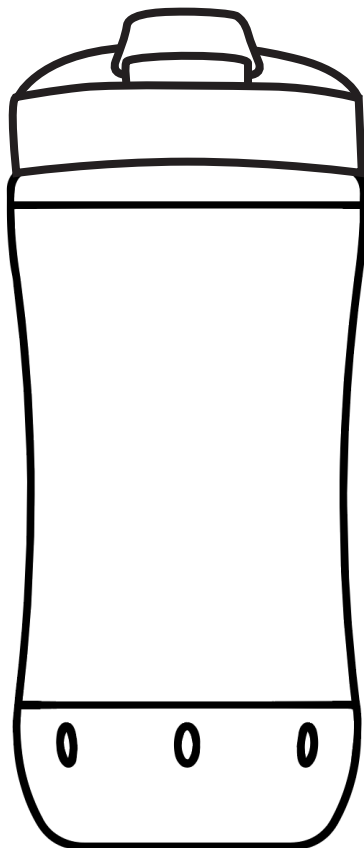


Dr Brown's™ milestones™



Straw Cup

Read and save these instructions for future use.

BEFORE FIRST USE

Use clean hands and clean surfaces when handling. Disassemble and clean the product and then place the components in boiling water for 5 minutes. This is to ensure hygiene. Wash all parts prior to use. Be sure the straw hole is clean.

BEFORE EACH USE

Pull on the straw in all directions before each use to make sure it does not tear. Inspect carefully, especially when the child develops teeth, and replace the straw immediately if it shows any signs of wear or damage, such as cracking or change of shape. Small pieces can accidentally be inhaled and cause serious injury. Clean before each use. The straw must be clean and free of obstructions.

CLEANING

All parts are dishwasher safe (top rack only). Avoid overly aggressive cleaning of any parts to prevent damage to sealing surfaces. Do not sterilize or boil the insulated straw cup vessel after the initial boil. The cap, handles, and straw components are safe for use in electric sterilizer, microwave sterilizer or boiling water.

ASSEMBLY & USE

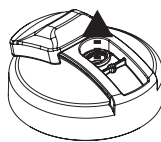
Assemble both straw pieces **firmly** together.



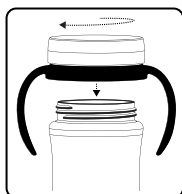
✓
rubber collar
is visible
when straw is
snapped
in place



Pull through lid until
straw **snaps into place**.



✗
NO rubber collar
is visible
when straw is
not fully snapped



If your cup has removable handles, assemble handles with cap before tightening onto cup. Connect notches in handles with structure under cap. Fill cup and tightly screw cap, with or without handles, onto cup.

For your child's safety and health

WARNING

- Continuous and prolonged sucking of fluids will cause tooth decay.
- Always check food temperature before feeding.
- Throw away at the first signs of damage or weakness.
- Keep components not in use out of the reach of children.
- Never attach to cords, ribbons, laces or loose parts of clothing. The child may be strangled.
- Never use straw as a pacifier/soother.
- Always use this product with adult supervision.
- Always use the cup with straw installed. The cup will not function properly without it.
- Always check the straw for signs of wear and replace when damaged.
- Inspect the straw before each use and pull the straw in all directions. Throw away at the first signs of damage or weakness.
- Hot or carbonated liquids are not recommended.
- Do not use a microwave oven to heat the cup because microwave ovens can create hotspots in the cup, contents and/or components.
- The components of this cup are not toys and should not be given to children to play with or suck on.
- Do not leave the product in direct sunlight or heat or leave in disinfectant (sterilizing solution) for longer than recommended, as this may weaken the straw.
- Do not allow a child to walk or run while using any cup.
- Straws are not suitable for a child under six months.